

Little hedgehog

Feel free to sell Your finished items. Mass production is - of course - not permitted. Do not copy, alter, share, publish or sell pattern, pictures or images. Copies be made for owner's personal use only.

ATTENTION: Please be aware that I only share my patterns via www.zhaya.de/ www.zhaya.eu. If you have downloaded this FREE pattern from anywhere else, please delete it immediately - as there are sites where anonymous hackers upload pattern files containing viruses, allowing them to access your computer and steal your personal and financial details.



Materials:

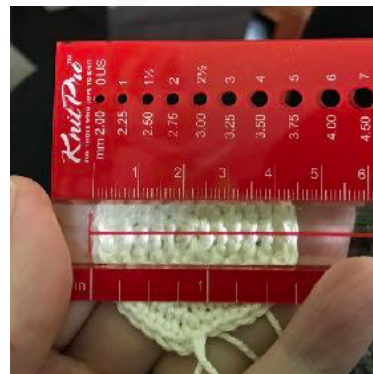
When using the suggested materials, it will be about 15 cm tall.

- Wool sport weight, e. g. Schachenmayr Catania (no. 263); some black, dark brown and red; for the spines DK: e. g. Schachenmayr Bravo (a ball of each color: no. 08197, 08281, 08200 and small amount of white)
- Crochet hook in suitable size (for me: 2.0 mm)
- Stuffing
- Eyes in suitable size (for me: 8 mm) - I used glass eyes to sew on

Abbreviations (US Terms):

MR = magic ring	inc = increase
sc = single crochet	dec = decrease
hdc = half double crochet	ch = chain
slst = slip stitch	BLO = back loop only
st = stitch	FLO = front loop only
(-) x = repeat inside of () for x nr of times	

The specifications of the wool and needle sizes are only examples/references. Please keep in mind that different yarn may result in a bigger or smaller piece. Make sure to adapt your hook size according to your yarn and personal tension. When crocheting Amigurumis you should use a much smaller needle size than indicated on the label or you would use it for other crochet projects so that no holes are made when the piece is stuffed. With a needle size of 2 mm, my gauge sample results in a diameter of 4.5 cm for six crocheted rounds.



Crochet in continuous rounds (spirals), unless otherwise stated.

For help with invisible color changes, increases and decreases, please visit the „Tips, Tricks and Tutorials“section on my website www.zhaya.de.

I hope, it's understandable and I'm really sorry if something sounds weird. 😊

Head:

Skin color

1. sc 6 in MR (6)
2. inc x6 (12)
3. inc x3, sc 6, inc x3 (18)
4. sc in each st around (18)
5. (sc 1, inc) x3, sc 6, (sc 1, inc) x3 (24)
6. sc in each st around (24)
7. sc 6, sc 3 in 1 st, sc 1, inc x8, sc 1, sc 3 in 1 st, sc 6 (36)
8. sc 6, inc x3, sc 1, (sc 1, inc) x8, sc 1, inc x3, sc 6 (50)
9. sc 6, (sc 1, inc) x3, sc 26, (sc 1, inc) x3, sc 6 (56)
- 10.-12. (3 Rounds) sc in each st around (56)

If you use safety eyes, attach them between round 7 and 8 with a distance of 8-10 stitches.

13. sc 6, (sc 1, dec) x3, sc 26, (sc 1, dec) x3, sc 6 (50)
- 14.-18. (5 Rounds) sc in each st around (50)
19. (sc 8, dec) x5 (45)
20. (sc 7, dec) x5 (40)
21. (sc 6, dec) x5 (35)
22. (sc 5, dec) x5 (30)
23. (sc 3, dec) x6 (24)
24. (sc 2, dec) x6 (18)
25. (sc 1, dec) x6 (12)

Stuff and shape the head.

26. (sc 2, dec) x3 (9)

Fasten off invisibly.

Nose:

Black

1. sc3, hdc6 in MR (9)

Fasten off, leave a long tail for sewing.

Sew the nose to the nosetip, hdc point upwards.



To sculpt the face, mark the spots for the eyes and corners of the mouth with pins. I placed the marks for the eyes between round 7 and 8 with approx. 8-10 stitches. The corners of the mouth are approx. where the 3in1 stitches were crocheted (round 7). Now thread a strong thread into a long needle. To do this, insert the needle from the bottom of the head (approx. the middle) and come out at the first mark for one eye, thread the eye, insert the same stitch again and go back to the beginning, repeat if necessary (then the eye holds particularly well), tighten so that an eye socket is formed and knot very well with at least three knots. Repeat for the other eye.



If you use safety eyes, sculpting is a little more difficult, you need to make the sculpting stitches as close to the eye as possible.

Now insert an assist pin a few laps downwards into the middle between the two corner needles. Hold a thread to the pins to check the line of the mouth, replace the pins if necessary. With this head it is quite easy to place, because you just have to follow the course of the lap, that fits quite well. Of course, you can also choose a different course. Now insert the needle from below again, come out at the first corner of the mouth, run the thread along the underside and insert it again into the second corner of the mouth, back down to the beginning. Tighten the thread and knot it well.

Now rework the mouth with red yarn. Embroider the eyebrows with thin black thread. If desired, the cheeks can still be colored pink or red, e.g. with chalk pastels.

Ear (make 2):

Skin color

1. sc 6 in MR (6)
2. inc x6 (12)
3. (sc 1, inc) x6 (18)
- 4.-5. (2 Rounds) sc in each st around (18)
6. (sc 1, dec) x6 (12)
7. sc in each st around (12)

Fasten off, don't close, leave a long tail for sewing.

Flatten the ears and pin it to an appropriate place. I've placed them between round 15 and 17 in line with the eyes (see picture). If it looks nice for you sew it to the head.



The head is ready now, it follows the

Body:

Skin color

1. sc 6 in MR (6)
2. inc x6 (12)
3. (sc 1, inc) x6 (18)
4. (sc 2, inc) x6 (24)
5. (sc 3, inc) x6 (30)
6. (sc 4, inc) x6 (36)
7. (sc 5, inc) x6 (42)
8. (sc 6, inc) x6 (48)
9. (sc 7, inc) x6 (54)
- 10.-18. (9 Rounds) sc in each st around (54)
19. sc 12, (sc 3, dec) x6, sc 12 (48)
20. sc in each st around (48)
21. sc 9, (sc 3, dec) x6, sc 9 (42)

22. sc in each st around (42)
 23. sc 6, (sc 3, dec) x6, sc 6 (36)
 24. (sc 4, dec) x6 (30)
 25. (sc 3, dec) x6 (24)
 26.-27. (2 Rounds) sc in each st around (24)
Fasten off, don't close, leave a long tail for sewing.
Stuff and shape the head.
Sew the head to the body (preferably with mattress stitch).

At this point I've marked the line of the spines with pins. I've made it at this point because you can see where to attach arms and legs, because it's easier to sew them on before attaching the spines.



Forepaw (make 2):

Skin color

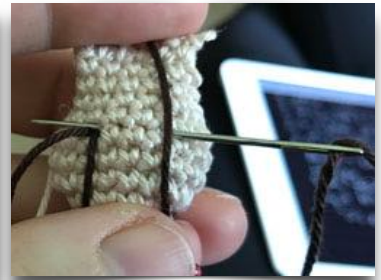
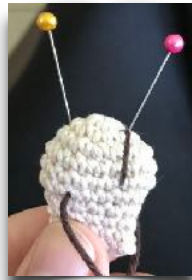
1. sc 6 in MR (6)
2. inc x6 (12)
3. inc x3, sc 3, inc x3, sc 3 (18)
- 4.-6. (3 Rounds) sc in each st around (18)
7. dec x3, sc 3, dec x3, sc 3 (12)
- 8.-9. (2 Rounds) sc in each st around (12)

Stuff loosely and rather flat, less towards the end.

Flatten end and crochet together with sc.

Fasten off, leave a long tail for sewing.

Now form the paw with a contrasting thread (I used dark brown). Insert two assist needles into the upper side, where the thread should run along. These needles help to prevent the thread from slipping when shaping. Now insert the needle on one side, go straight through to the other side, run the thread over the paw at the top and insert it again into the same stitch as at the beginning, but this time do not come out again straight through but offset by 3-4 stitches, run the thread over the paw again at the top, insert the thread opposite to the point where you came out before and now go back to the beginning. Tighten everything so that the paw forms. This sounds more complicated than it is. But if necessary, you can also simply embroider the toes if you can't get it right.



Finally, press the paw slightly into shape, so that the underside is rather flat or slightly bent inwards.

Back paw (make 2):

Skin color

1. sc 6 in MR (6)
2. inc x6 (12)
3. (sc 1, inc) x6 (18)
4. (sc 2, inc) x6 (24)
- 5.-8. (4 Rounds) sc in each st around (24)
9. (sc 2, dec) x6 (18)
10. (sc 4, dec) x3 (15)
11. sc in each st around (15)

Stuff loosely and rather flat, less towards the end.

Flatten end and crochet together with sc.

Fasten off, leave a long tail for sewing.

Now shape the toes again with contrasting yarn (as with the forepaws). Also press them into shape at the end, so that the underside is rather flat and possibly curved inwards.

Sew the fore and back paws to the body along the previously marked spine line (see photos), the back paws under the body.



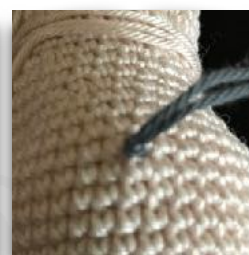
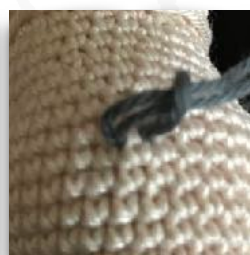
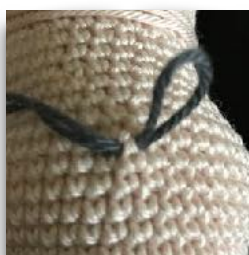
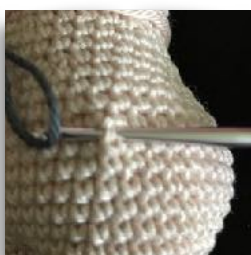
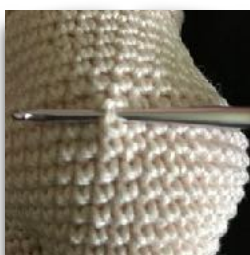
If you want, you can form a belly button. Insert the stitch from the bottom with a long needle, again using a strong thread. Come out at the front in a suitable place, insert a stitch offset and come out again at the bottom at the beginning. Tighten the threads until the belly button has formed, knot the threads well and hide them in the body.

All that's missing now are the spines. They are knotted in and for this you need a lot of wool threads of equal length.

In order to get many threads of the same length, you only need a piece of cardboard of the right width to wind the wool. I used a cardboard with 10 cm width, because I wanted to have threads in 10 cm length, I cut them and cut them again in the middle. Of course, you can also use longer threads if you want it to get more voluminous.



You don't need a special tool to knot it in, you can simply use the crochet hook. Fold a thread once, go with your hook around a stitch, draw the loop through and then pull the two open threads through the loop of the thread. Finally, tighten the loose ends.



First I knotted a row with white threads along the previously marked line (but not at the bottom). For the spines I chose a rather light mixture, namely I used a relation of 2:2:1 (2 light beige : 2 beige : 1 brown). Of course you can also choose other colors and/or other mixtures. The colors are always offset, again and again in different order, so that there is no repetitive pattern, but everything looks wild and random. It is knotted in every stitch and every row to create a dense spine coat. It has been shown that the cavity at the neck is quite fiddly when you start at the top of the head, so it may be better to work on the cavity first.



When all the threads are knotted in, the hedgehog has to go to the barber, cut all the threads to one length with scissors. Then the first, the white row is brushed fluffy with a wire grooming brush for pets and if necessary cut into shape again.

Your sweet little hedgehog is ready now :o)

